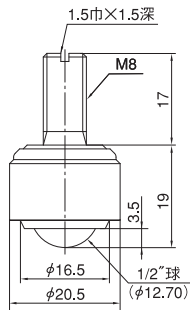


切削加工品(下向用)スチール製

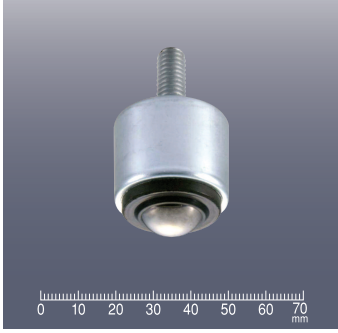
C-4D



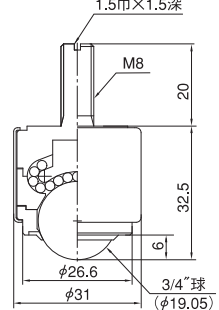
許容荷重10kg 自重35g



C-6DR (ゴムシール付)



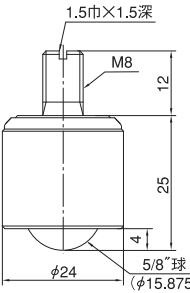
許容荷重50kg 自重145g



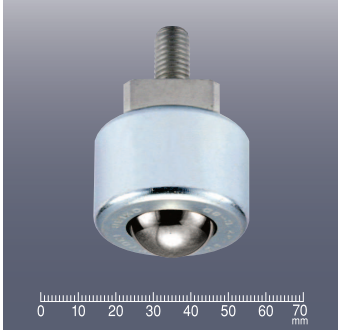
C-5D



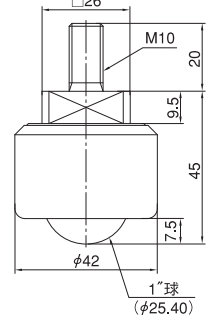
許容荷重20kg 自重70g



C-8D



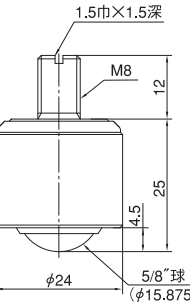
許容荷重80kg 自重325g



C-5DR (ゴムシール付)



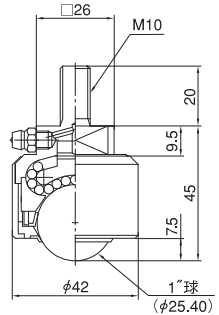
許容荷重20kg 自重70g



C-8DA (ゴムシール付)



許容荷重80kg 自重308g



C-6D



許容荷重50kg 自重145g

